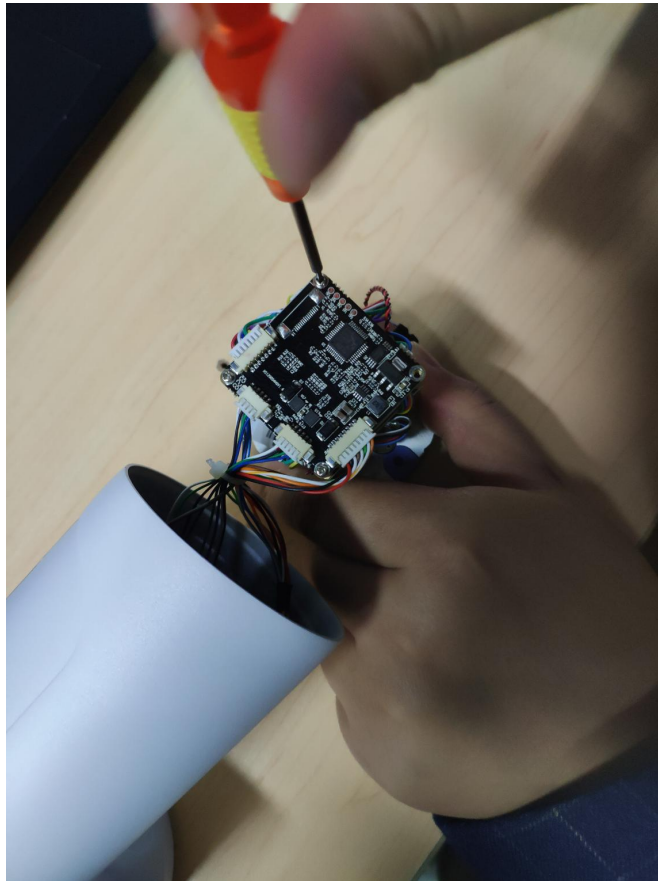


How to replace main board in P16 Camera

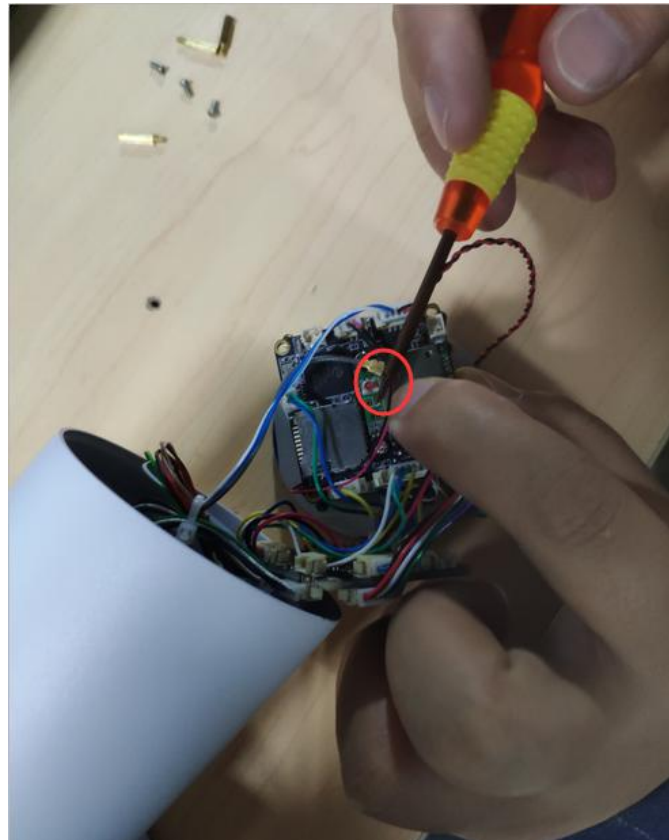
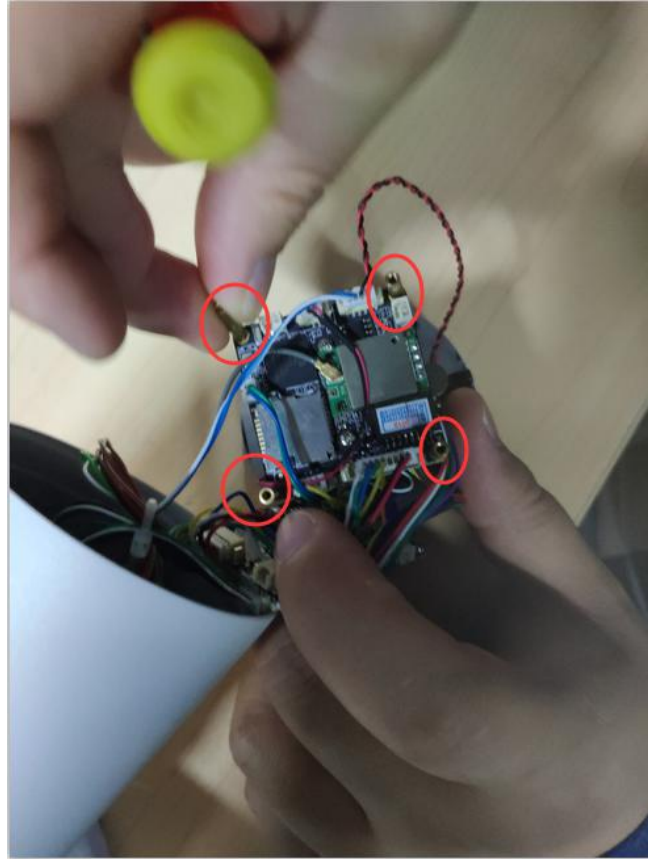
1. Disassemble two screws in front cover, and pull out the cover with tool



2. The lens is toward down , then disassemble four screws in first board you have seen

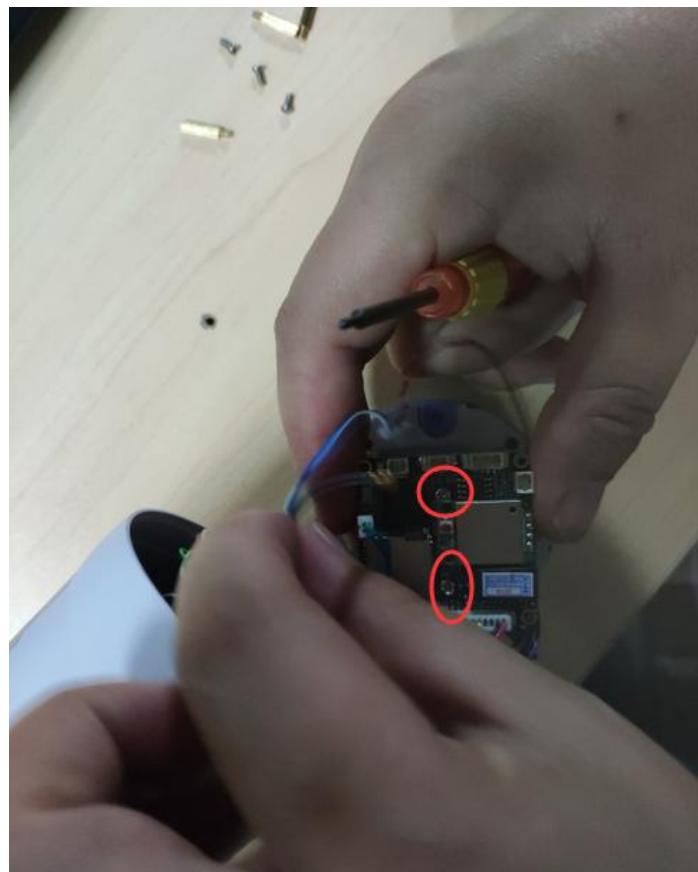
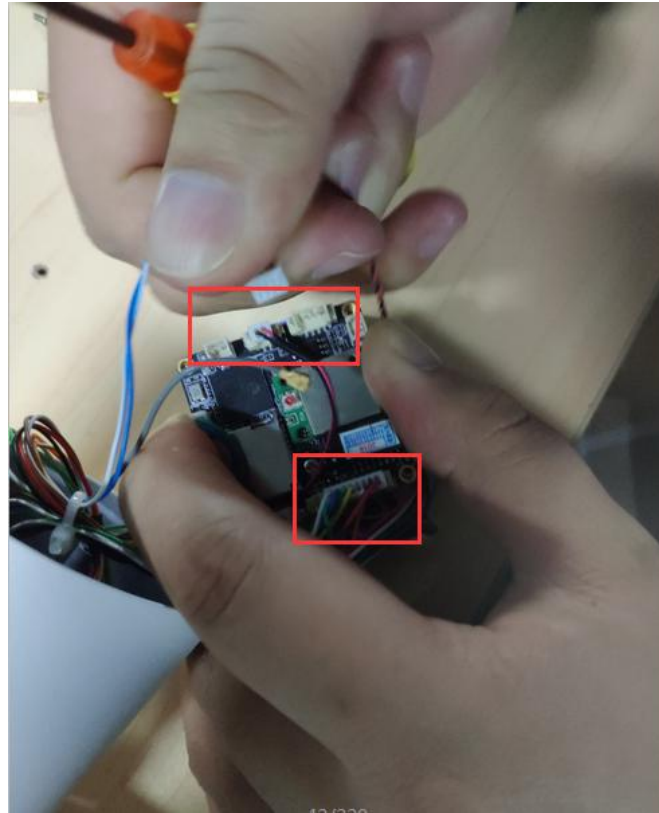


3. Then you will see second board which is main board. Take off four copper column
And loose the WIFI connection cord

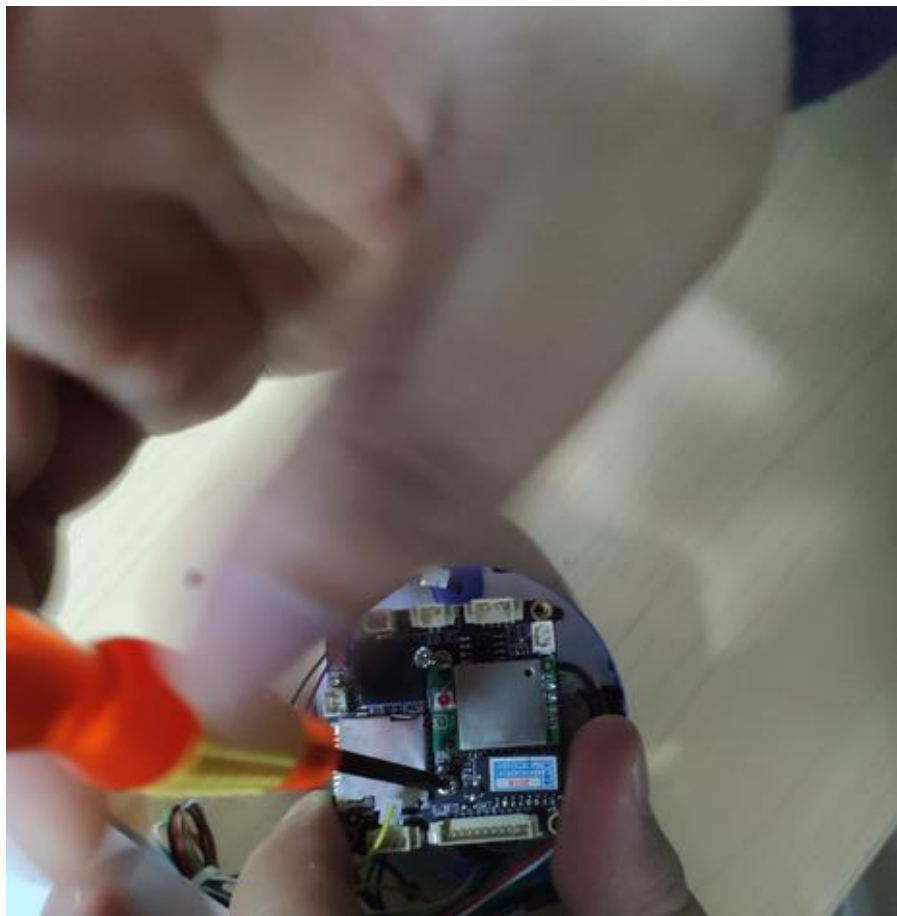
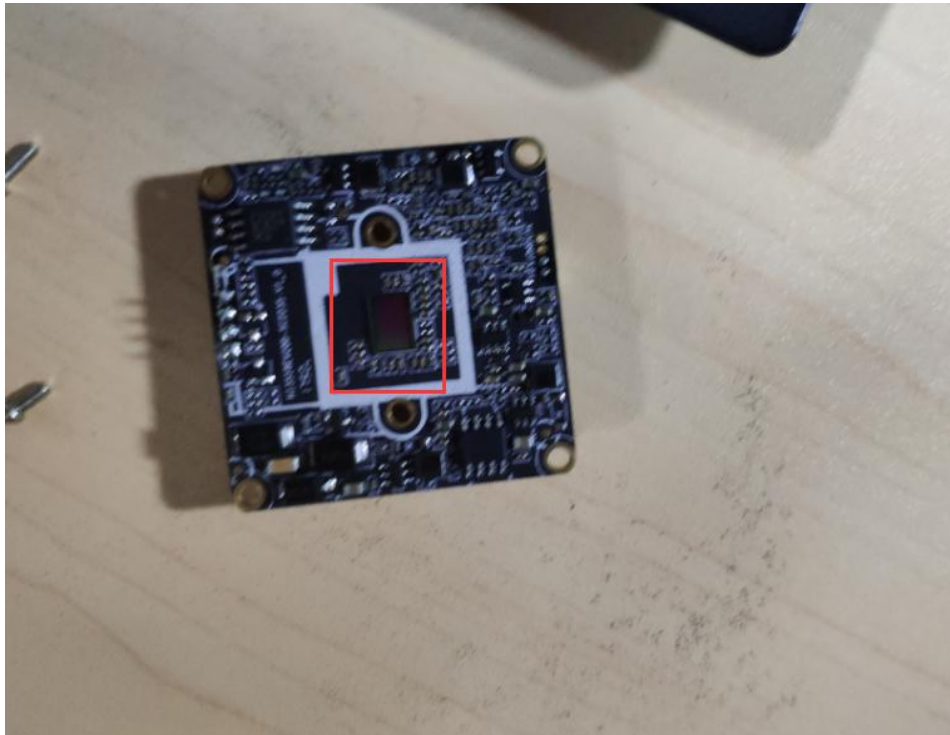


4. Pull out all cable on main board (Suggest take a picture of wiring on main board in case of that you will forget when you put them back)

Disassemble two screws on main board

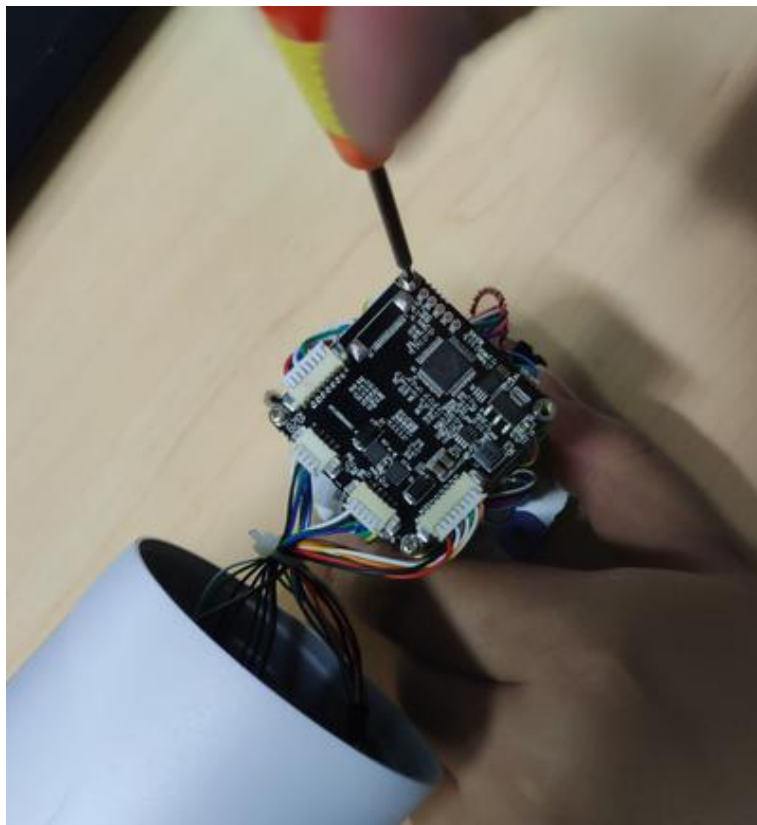
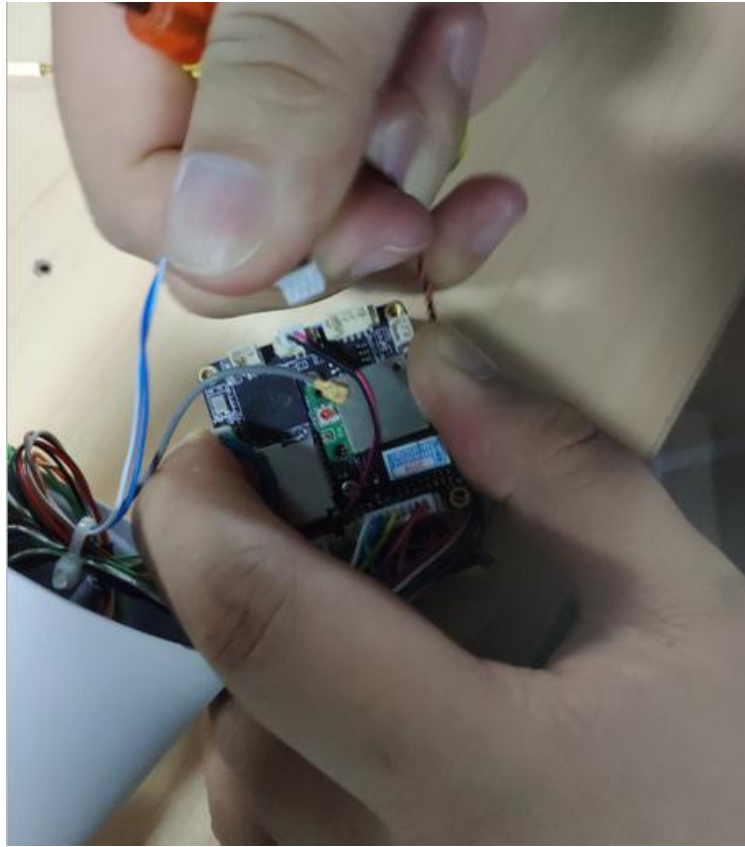


5. Take out the old board then replace it with the new
Please ensure the sensor in red frame without any dust or fingerprint
Then install two screws



6. Take everything back in original place

Please don't forget the picture about wiring on main board



8 Push back the front cover and put up two screws

