

HiEasy APP Series

IP Camera

Instruction Manual

Part 1: 【 HiEasy APP Operation Instructions】

Part 2: 【PTZ Function Operation and Description】

Part 3 : 【Speed dome Command Table】

Part 4: 【Windows PC WEB Operation Instructions】

Part 5: 【Windows PC Software Operation Instructions】

Part 1: 【 HiEasy APP Operation Instructions】

I.Download and install The APP

1, Quickly download and install by scanning the QR Code



HiEasy APP

2, Search for “HiEasy” in the mobile app store to download and install it

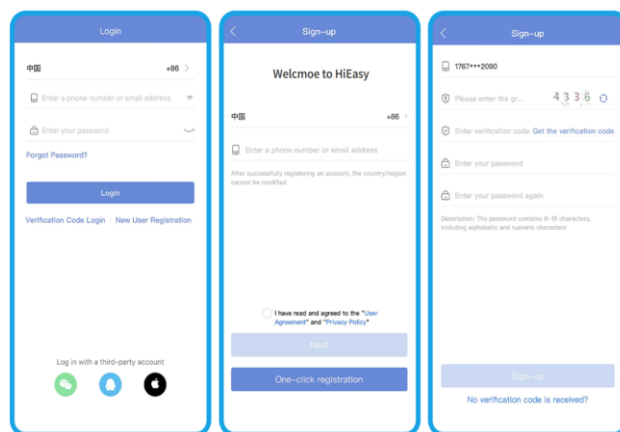
HiEasy



II.Account Registration and Login

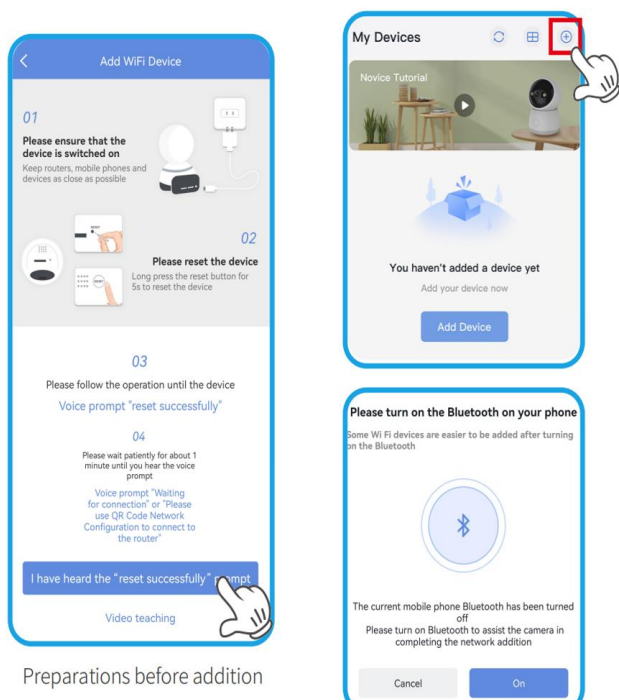
1,Open the APP,click”Register with Phone No./Email” and follow the prompts to register and account. Phone No. and Emails can both used for registration.

2,For existing accounts,directly enter the account and password to login.



III. WiFi Camera Connection Methods

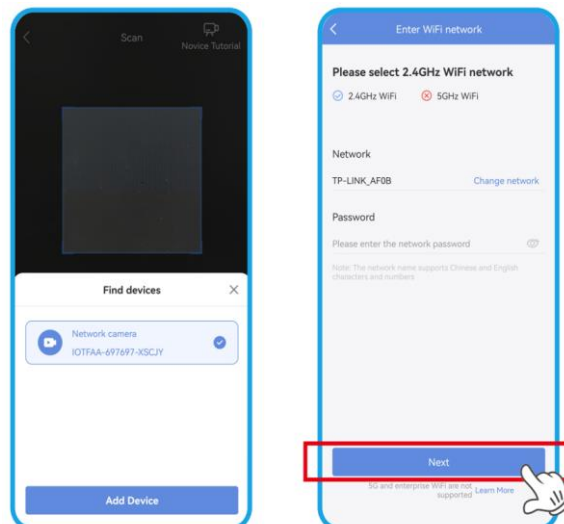
Before adding a WiFi camera, ensure that your mobile phone is connected to WiFi and Bluetooth is turned on. Place the camera close to the router and power it on.



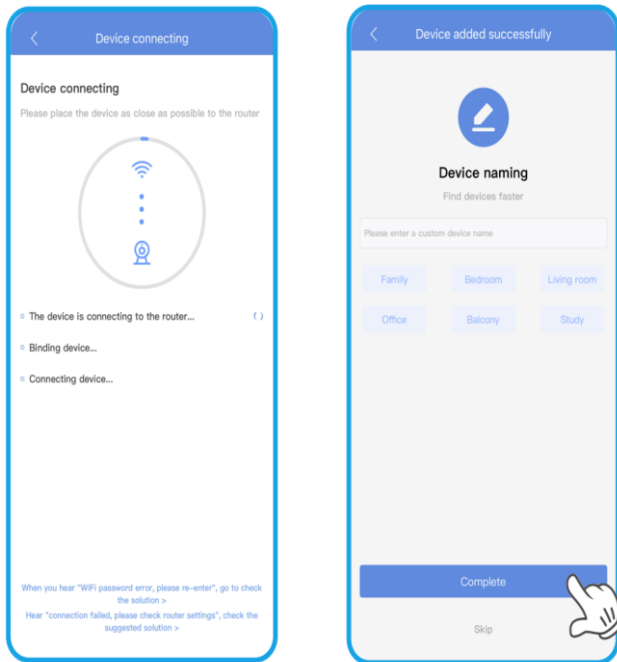
Bluetooth Pairing:

1,After the camera powers on and you hear the broadcast "Waiting to be added", open the APP and start adding the camera. If you hear an error broadcast, press and hold the reset button for 5 seconds to restart the camera.

2,Enter the WiFi password as prompted and wait. When the camera broadcasts "Device added successfully", the addition is complete. This process takes 60 - 120 seconds.

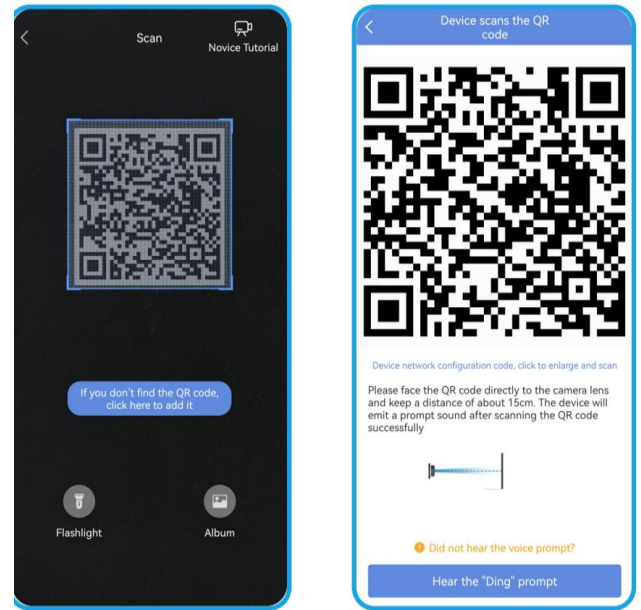


3, After successful addition, set the camera name and click to complete. You can then view the added camera on the home page.



QR Code Pairing:

Open the APP and scan the QR code on the camera as prompted.

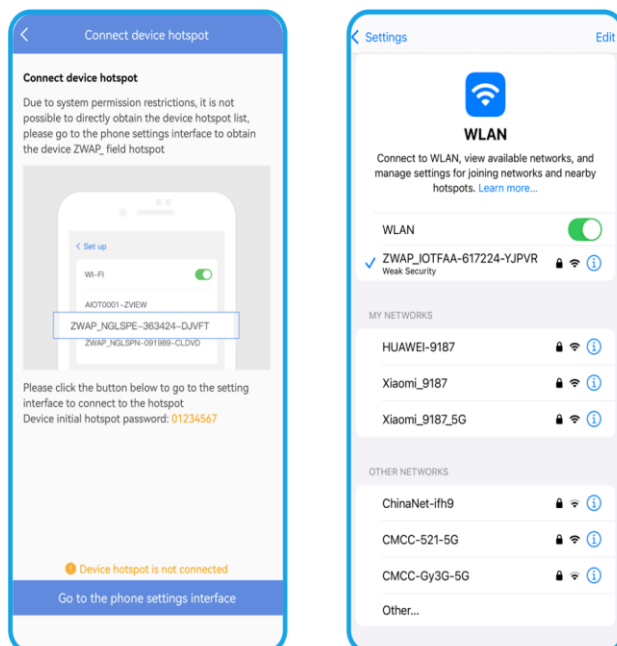


Scan the QR code on the With your Phone

use your phone to scan the QR generated by The camera

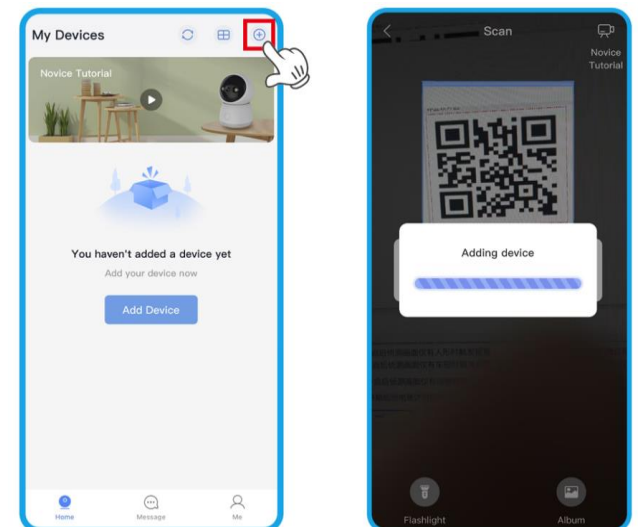
AP Hotspot Pairing:

- 1, Open the APP and select AP hotspot pairing as prompted.
- 2, Connect to the hotspot directly from your mobile phone for local area network viewing. Hotspot password: 01234567.



IV. 4G Camera Connection Method

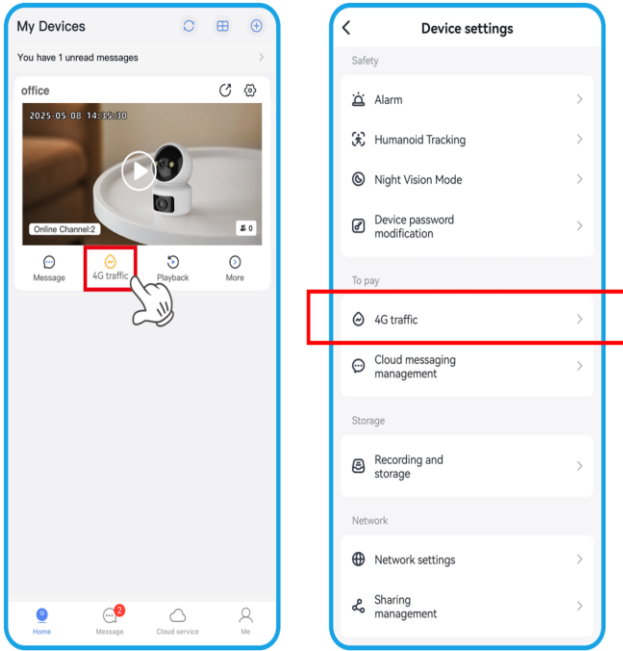
After the camera powers on and you hear the voice broadcast "Network connection successful", open the APP and scan the QR code on the camera body to add it. If there is no voice broadcast prompt, press and hold the reset button for 5 seconds and wait for the camera to restart before operating.



Click the "+" or scan the blue Prompt bar in the middle of The interface

Scan the QR code on the camera with your mobile phone

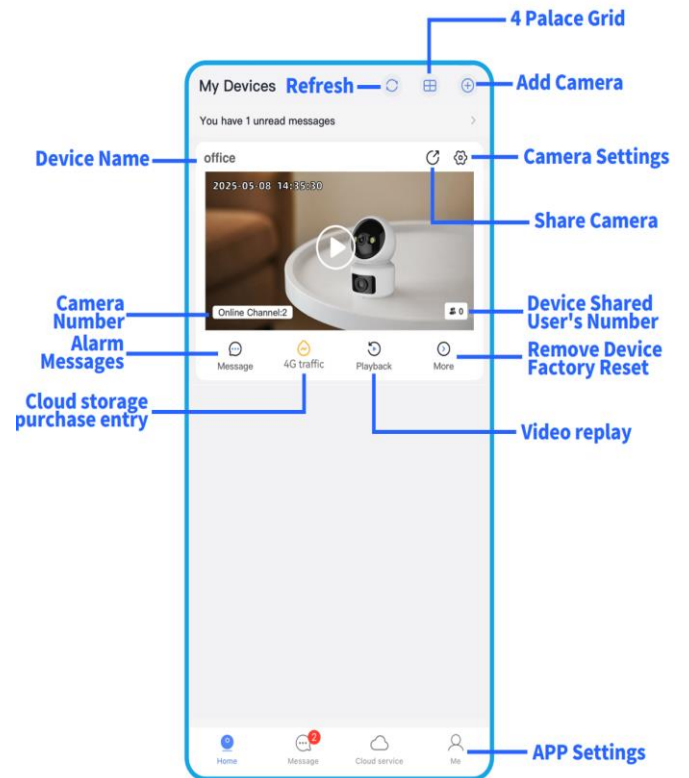
V. 4G Data Purchase



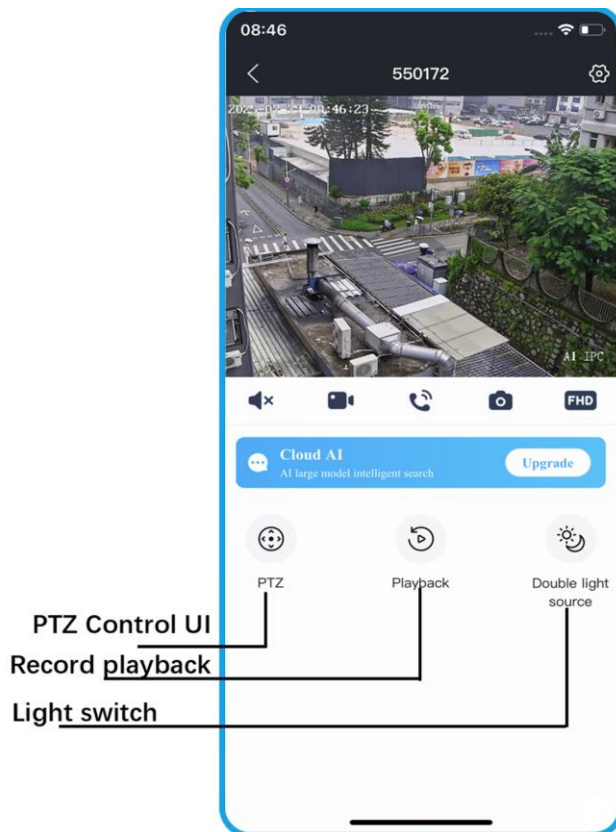
Home Page>4G Traffic Management

Home Page>Device setting >4G traffic mangement

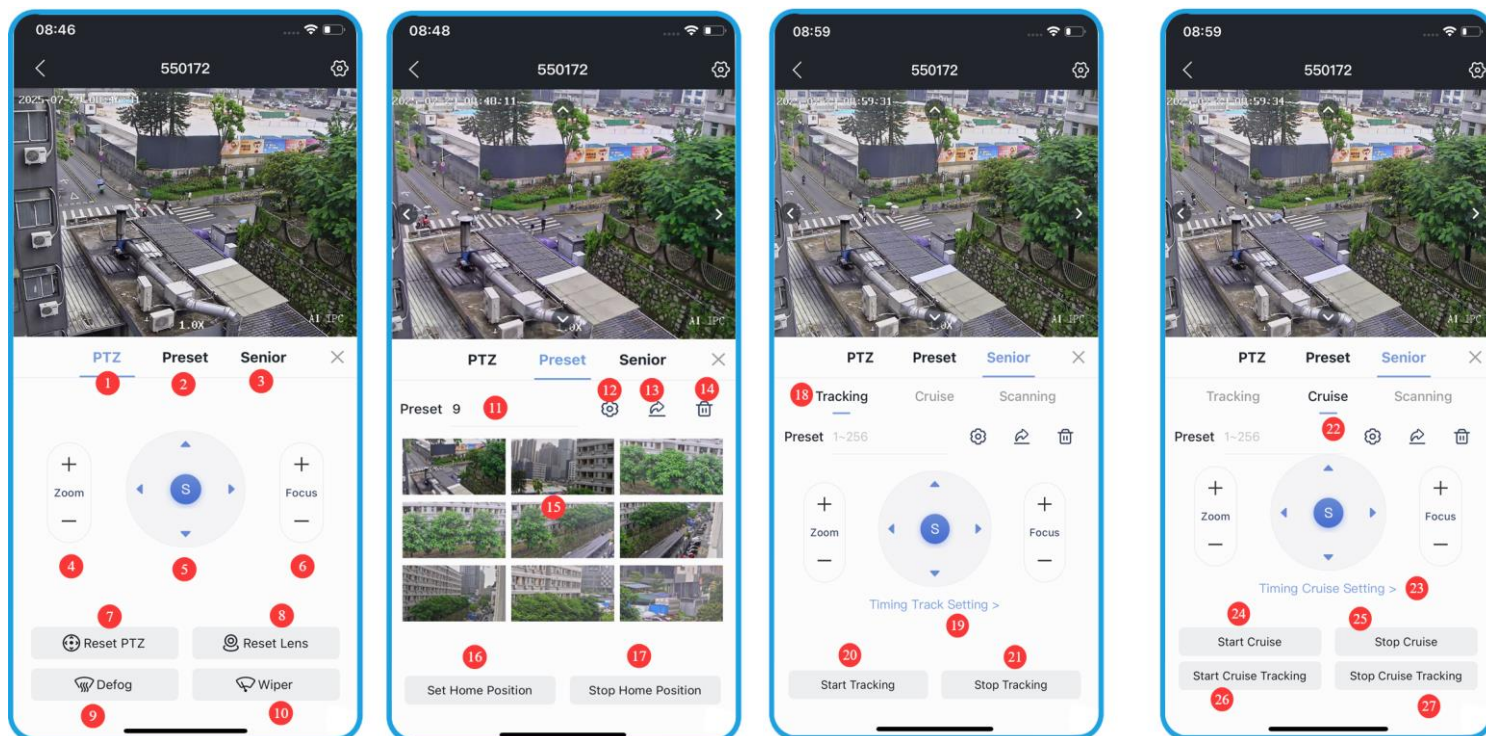
VI. Home Page



VI-1: Home Page for PTZ



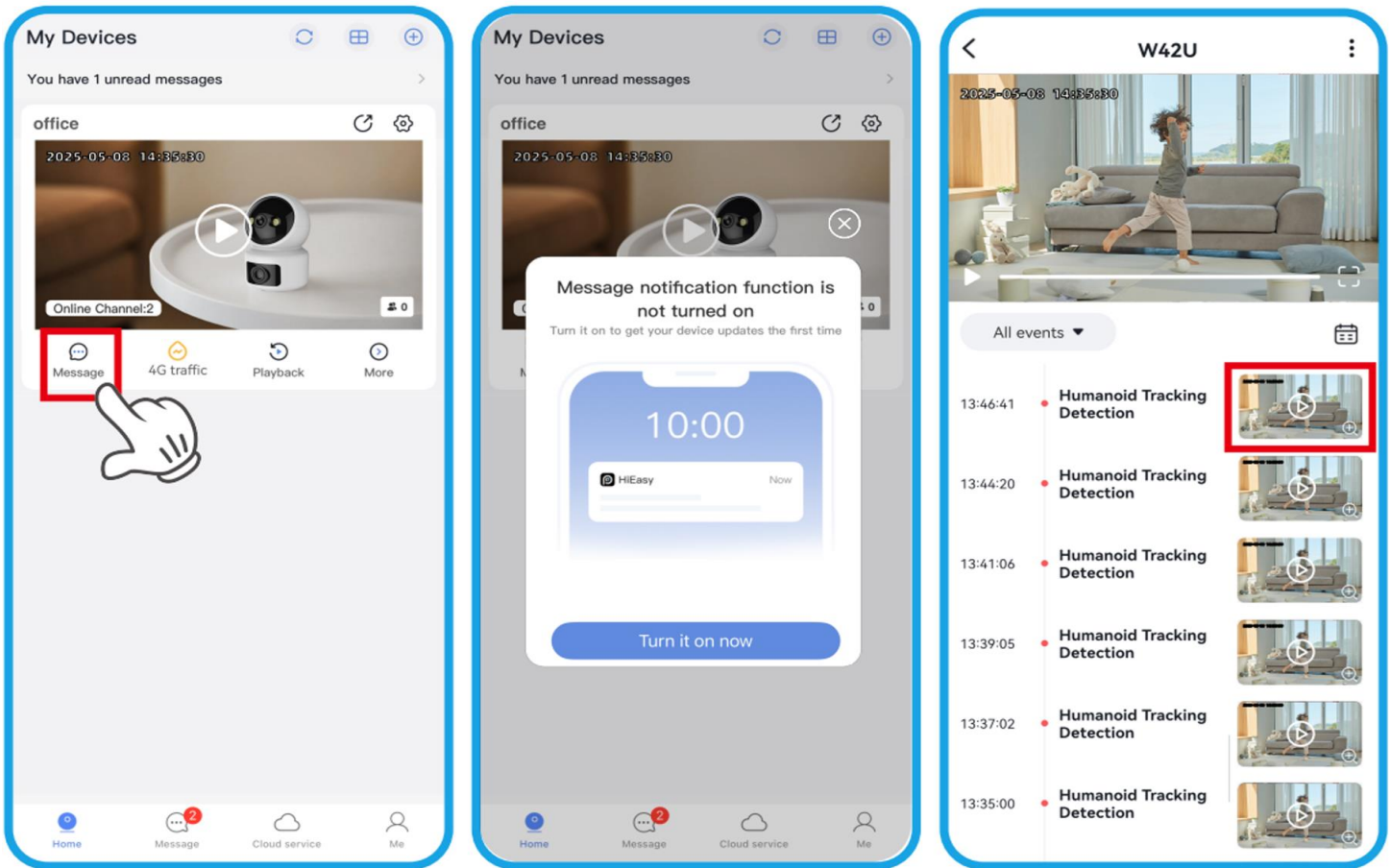
VI-2, PTZ camera operation interface instructions:



- 1: Enter PTZ control interface;
- 2: Enter preset position operation interface;
- 3: PTZ advanced function setting interface;
- 4: ZOOM+/-;
- 5: Pan/Tilt control;
- 6: Focus+/-;
- 7: Reset PTZ;
- 8: Reset lens;
- 9: Enable internal defogging function of camera(The camera needs to support this function);
- 10: Enable wiper function(The camera needs to support this function);
- 11: Preset position input field;
- 12: Set preset;
- 13: Call preset;
- 14: Delete preset position;
- 15: Display thumbnails of 1-9 preset positions;
- 16: Setting and turn on home position;
- 17: Turn off home position;
- 18: Enter the tracking control interface;
- 19: Set the tracking time;
- 20: Start tracking;
- 21: Stop tracking;
- 22: Enter the cruise control interface;
- 23: Set the automatic cruise time period;
- 24: Start cruise;
- 25: Stop cruise;
- 26: Start cruise tracking;
- 27: Close cruise tracking

VII. Alarm Push:

1. After the device is added successfully, click "Alarm" and follow the prompts to operate.
2. Alarm messages can be used to view videos and pictures, which are saved for 7 days by default.

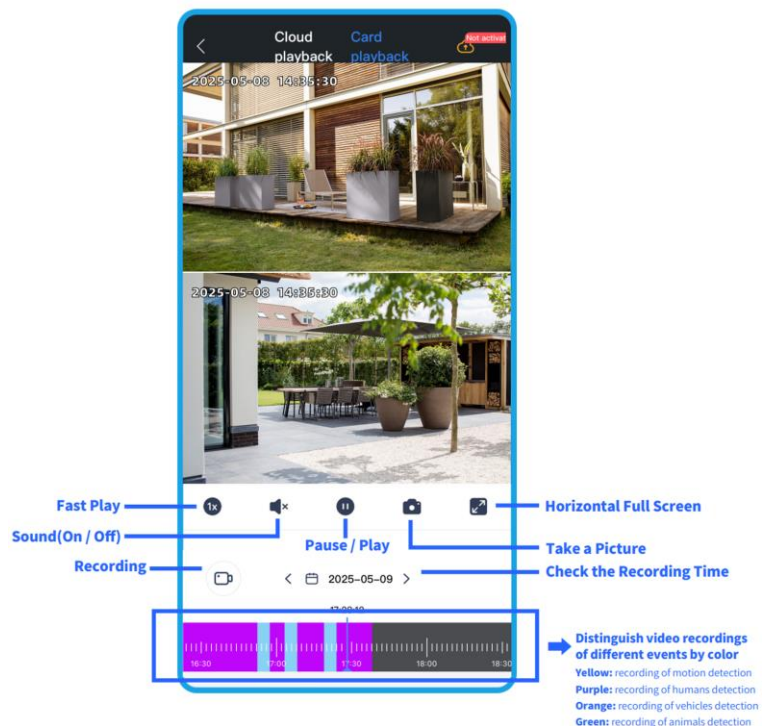
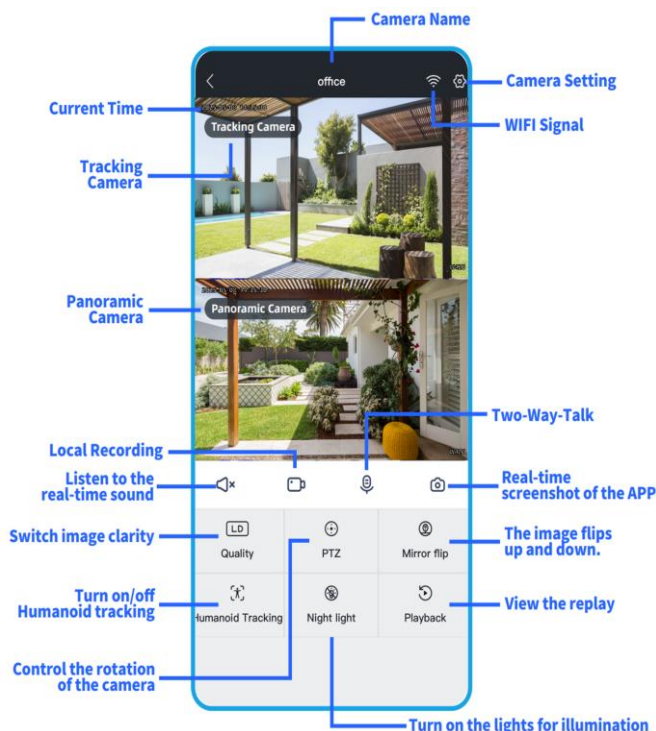


VIII. Live View

Click preview window on the home page to enter the live view screen

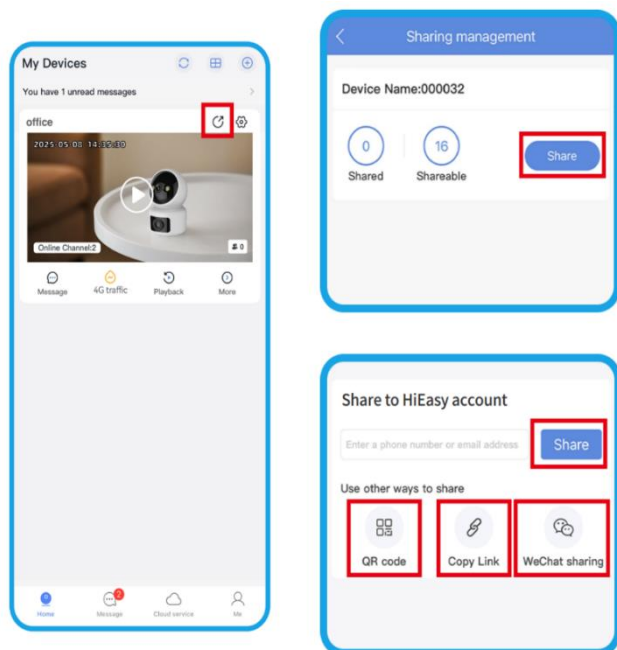
IX. View Playback

View recorded videos. Recordings can be retrieved from the TF card or cloud storage. Cloud storage can be purchased within the APP for more secure recording.



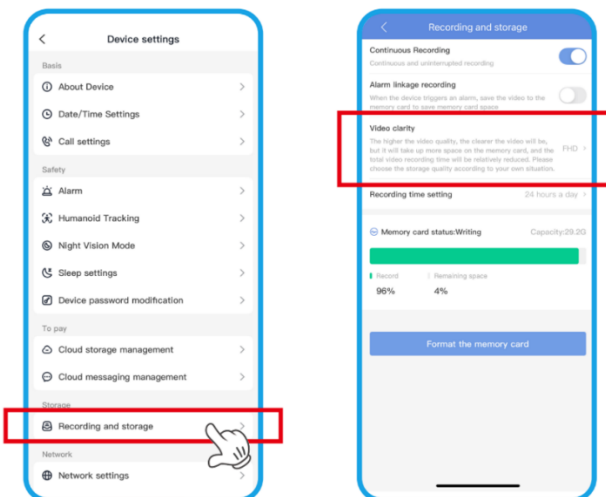
X.Sharing Function:

- 1.Click the share icon on the home page to share the camera with family and friends for viewing.(Requires account registration)
- 2,Enter the sharing settings to set sharing permissions,with multiple sharing methods available.



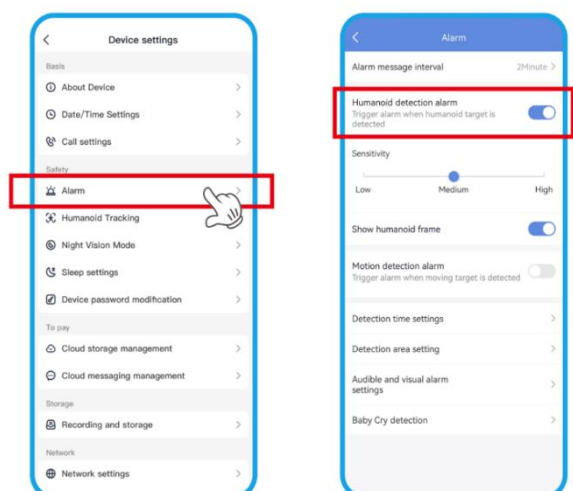
XI.Recording Storage

- 1,Continuous Recording:24 hours continuous recording throughout the day
- 2,Alarm-Triggered Recording:Records only after and alarm is triggered,which can save storage space on the memory card and make the recording last longer.
- 3,Video Clarity:Higher clarity results in shorter video storage time
- 4,Formatting the storage card:New cards need to be formatted before first use,Existing recordings will be cleared when formatting



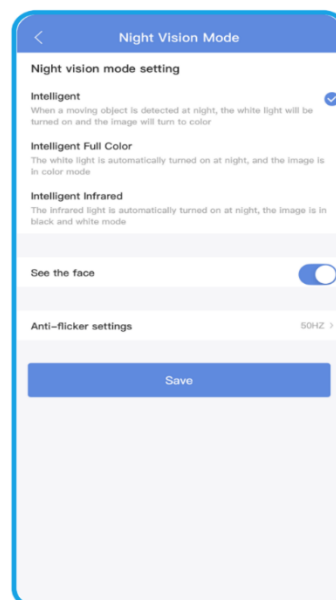
XII.Alarm Management

- 1.**Human Shape Detection Alarm:** When turned off, it will not detect people entering and will not send alarm messages. High sensitivity detects at a longer distance, and low sensitivity reduces false alarms.
- 2.**Motion Detection Alarm:** Used to detect the movement of objects other than people. Off by default.
- 3,**Detection Area:** Set the area for human shape detection.
- 4,**Sound and Light Alarm:** Set different alarm sounds and modes.
- 5,**Crying Detection:** Detects the crying of infants and toddlers to monitor the baby.

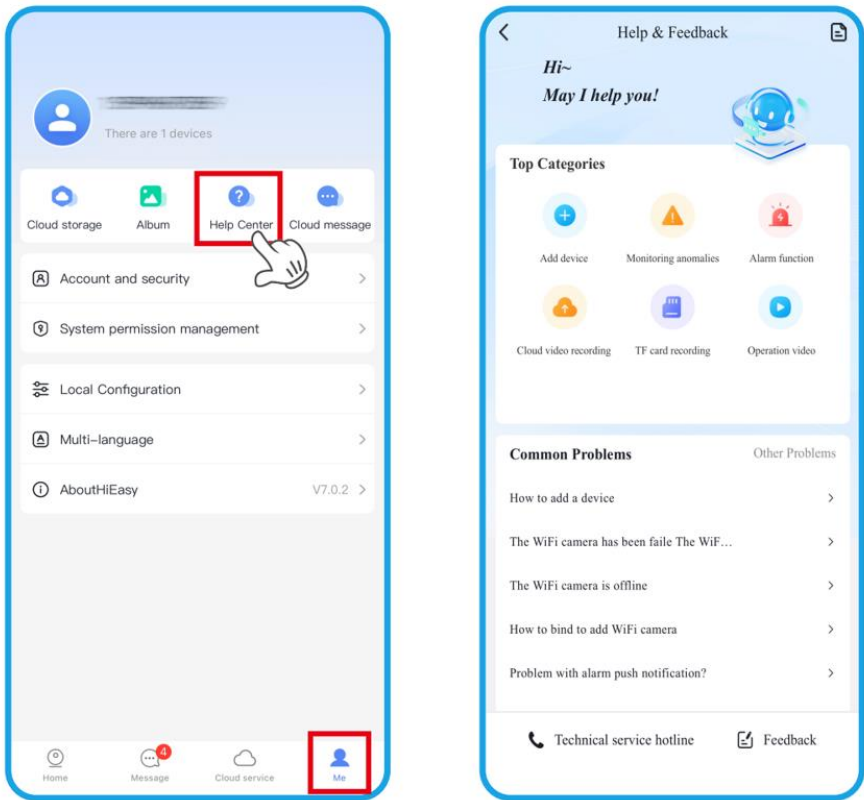


XIII,Night Vision Modes

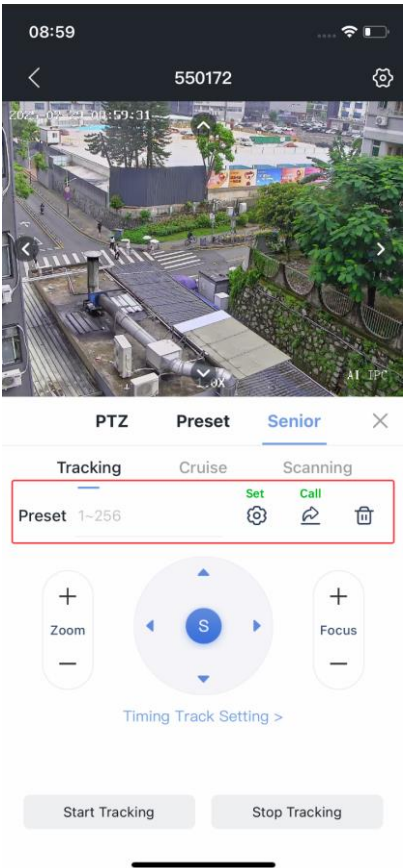
- 1,**Smart Dual-Light:** In night vision black-and-white mode, when a person is detected, the white-light floodlight turns on and the image becomes color. It reverts to black-and-white after the person leaves.
- 2,**Smart Full-Color:** In night vision color mode, the white-light floodlight turns on automatically.
- 3,**Smart Infrared:** In night vision black-and-white mode, the infrared fill-light turns on.



Frequently Asked Questions:Please open the "Help" center in the APP. There are answers to common questions and video tutorials, which can easily solve your problems.



Part 2 【PTZ Function Operation and Description】



Professional name explanation: Settings/Add:set preset, Call:Call preset, [N]+[set]=Enter N first and then click SET.“+”=Then

1.Preset settings

Rotate the camera to the position you want, then set this position to “N” preset
[N] +[SET] ,N is preset point, 1-255 number can be optional (But the command Preset isn't include). Set= set preset

2.Call preset(need set the corresponding preset point) : [N]+[CALL]

N for preset point, 1-255 number can be optional, camera can move to preset point after call, Zoom, focus and aperture lens will automatically change to preset parameters , camera preset display on the monitor.

3.Delete all preset point: [100] +[CALL] ,Call no.100 preset, clear the all preset :[1]+[0]+[0]+[CALL] .

4.Auto scan(Horizontal rotation)

[120]+[CALL], call No.120 ,the lever of 360 degree clockwise automatic scanning

Modify speed of Auto scan :

[121]+[Set] +[N]+[Set]; (N=1-10; N represents scan speed percentage,default is 8=80%)

If you wanto to change speed of auto scan to **50%**; Setting method: [121]+[Set] +[5]+[Set]

5,The inspection group programming

Before you start cruising, you first need to set the preset position in the cruise path.**Please refer to “ 3.Preset settings”**

[101]+[CALL] for Open the first Cruise of 1-64 to scan ;

Modify the stay time of the Cruise:

[123] +[Set] + [N]+[Set]; (N=3-10; N represents the dwell time at each preset,default is 5 seconds)

If you change the dwell time to **10 seconds**. Setting method:[123]+[Set] + **[10]**+ [Set]

Modify speed of the Cruise:[115]+[Set] + [N]+[Set]; (N=1-10; N represents Cruising speed percentage,default is 8=80%)

If you change speed of the Cruise to **40%**; Setting method:[115]+[Set] + **[4]**+ [Set]

6,Left and right limit scan settings

The users can set left and right limit point in the range of the rotation, the speed dome can return scan in setting range

[81]+[SET]: left limit; [82]+[SET]: right limit, [83]+[CALL]: start right and left limit scan

Modify the speed of right and left limit scan:

[141] +[SET]+[N] +[SET]; (N=1-10; N represents Cruising speed percentage,default is 5=50%)

If you change speed of the limit scan to **100%**; Setting method:[141]+[Set] + **[10]**+ [Set]

7.Idle action settings:The camera performs a certain function in standby mode

[131]+[Call]:OFF Idle position set

Idle position setting:[131]+[Set]+[N]+[Call],

N=Function preset;When N=98, the camera Open the first Cruise of 1-16 to scan function. Setting method:[131]+[SET]+ [98]+[CALL]

Set the time when the idle action start: [132]+[set]+[N]+[SET]; (N=1-30; N represents Idle time,default is 5 minutes)

8.Restore factory settings for Speed dome

[106]+[Call]+[64]+[CALL] for restore PTZ speed dome to factory setting;

Setting method:[106]+[Call]+[64]+[CALL]

Part 3 : 【Speed dome Command Table】

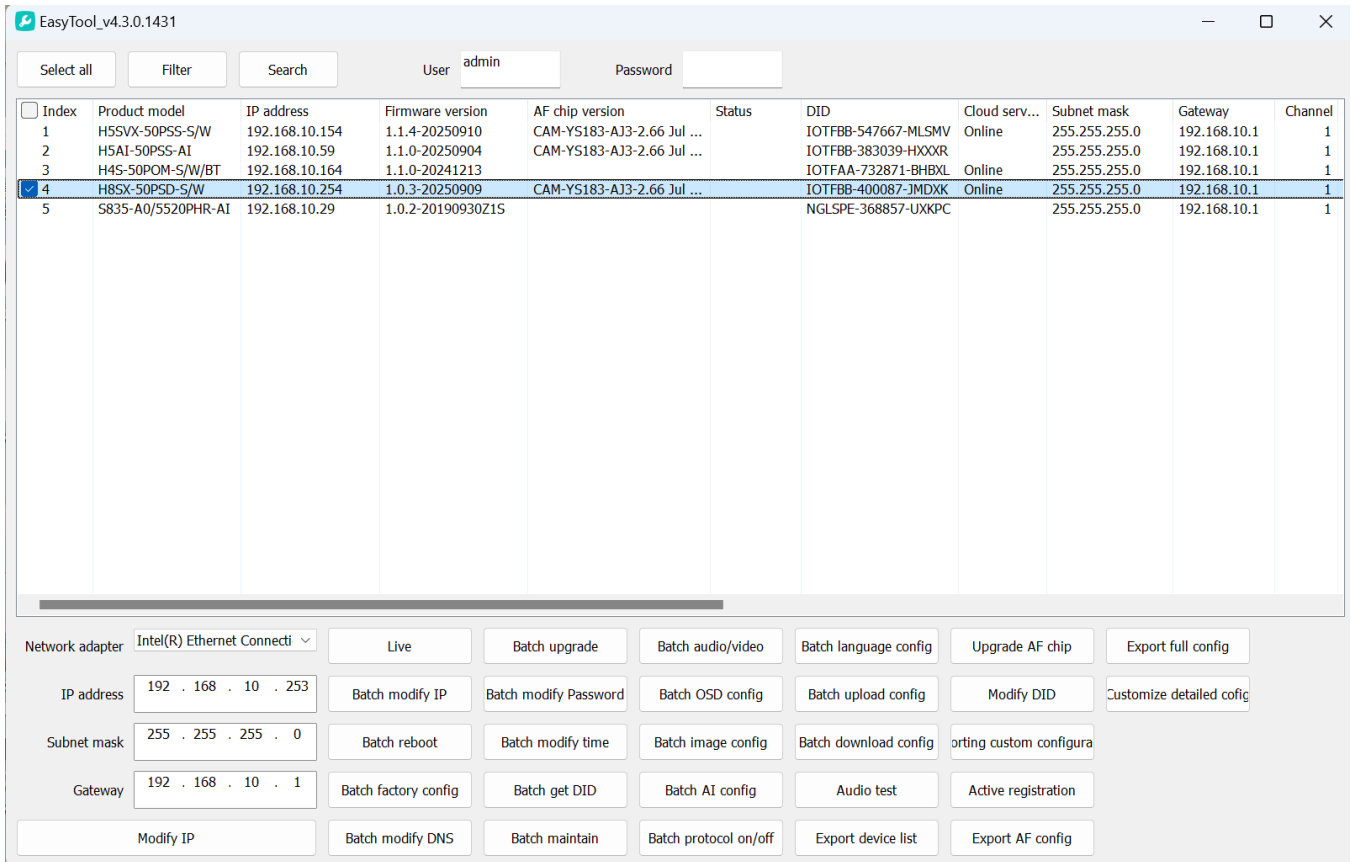
| Command Name | Function description | NO. | Call | Set |
|---|--|-----|------|-----|
| Tracking Command | | | | |
| Set a Return Position | This position is the initial position where the camera starts tracking/the automatic return position after tracking:88+set | 88 | | √ |
| Turn on fixed-point tracking | Turn on tracking based on initial position:97+call | 97 | √ | |
| Set tracking return time | The time when the camera automatically returns to the initial position after the tracking target disappears:153+set+N+set,N=1-30 seconds, default N=10 | 153 | | √ |
| Turn on cruise Tracking | Camera activation is based on preset position cruise tracking (some preset positions need to be set first (range: 1-32):98+call | 98 | √ | |
| Turn off all Tracking | 96+set | 96 | | √ |
| tracking Enable ZOOM | The camera automatically ZOOM when tracking:95+set (default) | 95 | | √ |
| Tracking invalid ZOOM | The camera invalid ZOOM when tracking , 95+call | 95 | √ | |
| | | | | |
| Set tracking Pan speed | 150+set+N+set, N=1-100,default N=60 | 150 | | √ |
| Set tracking Tilt speed | 151+set+N+set, N=1-100, default N=50 | 151 | | √ |
| Idle action | | | | |
| Settings idle action Automatically turn on after successful setting | 131+set+N+Call; N= Function command N=1 The camera automatically stays at preset position 1 when idle N=101 Turn on cruise; N=97 Turn on Fixed tracking N=83 Turn on area scanning; N=120 Turn on 360°Pan scanning;N=85 Turn on 360°Pan Tracking N=98 Turn on cruise tracking | 131 | | √ |
| Wiper contro l(if support) | 71+call (after executing once, the wiper will automatically stop after wiping 3 times, and can be operated repeatedly) | 71 | √ | |
| Defog control | 72+call: Enable defogging function. 72+Settings: Turn off the defogging function. Set the working duration of defogging: 73+settings+N+settings, N=1-24 hours, default N=1 hour | 72 | √ | |
| Defog time | Set the working duration of defogging: 73+settings+N+settings, N=1-24 hours, default N=1 hour (automatically closed after 1 hour of activation) | 73 | | √ |
| OSD Menu control | Called by 80+, the screen camera control menu can be opened, and the PTZ control direction key is used for rotation and setting. | 80 | √ | |
| General function setting of Speed dome | | | | |
| Modify manual control Pan Speed | 160+set+N+set, N=1-10, N=Speed ,default N=5 | 160 | | √ |
| Modify manual control tilt Speed | 161+set+N+set, N=1-10, N=Speed ,default N=5 | 161 | | √ |
| 360°Pan scanning | 120+call | 120 | √ | |
| Modify Pan scanning | 121+set +N+set, N=1-10,default N=5 | 121 | | √ |
| Area scanning | | | | |
| Set Left Border | Set the leftmost position of area scanning , 81+set | 81 | | √ |
| Set right Border | Set the rightmost position of area scanning , 82+set | 82 | | √ |
| Turn on area scanning | 83+call, | 83 | √ | |
| Modify Area scan speed | Modify Area scan speed , 141+set+N+set, N=1-40, default N=6 | 141 | | √ |
| Modify automatic recovery time | 126+Set+N+set,N=1-10(minute),default N=5 | | | |
| Cruise | | | | |
| Turn on cruise | 101+call | 101 | √ | |
| Modify cruise speed | 115+set+N+set, N=1-10,default N=5 | 115 | | √ |
| Modify cruise dwell time | Modify the dwell time at each preset position :123+set+N+set, N=1-200 seconds, default N=10 | 123 | | √ |
| Turn on speed ratio | he larger the ZOOM, the slower the rotation speed(default) | 108 | √ | |
| Turn off speed ratio | ZOOM changes, rotation speed remains unchanged | 108 | | √ |
| Focus mode setting | Focus mode setting: 250+Set+N+Call, When N=1, the camera will only automatically focus when ZOOM is triggered When N=2, any PTZ action triggered will automatically focus the camera When N=3, changes in PTZ or image transmission will also trigger radial basis function autofocus | 107 | | √ |
| Minimum focus distance setting | Minimum focus distance setting: 251+Set+N+Call, When N=1, the minimum focusing distance is 1.5 meters When N=2, the minimum focusing distance is 3 meters When N=3, the minimum focusing distance is 6 meters | | | |
| Del all preset | 100+call/140+call | 100 | √ | |
| Reset speed dome | 106+call+64+call | 106 | √ | |
| Reboot LENS and speed dome | 107+set+64+call | 107 | | √ |

Part 4: 【Windows PC WEB Operation Instructions】

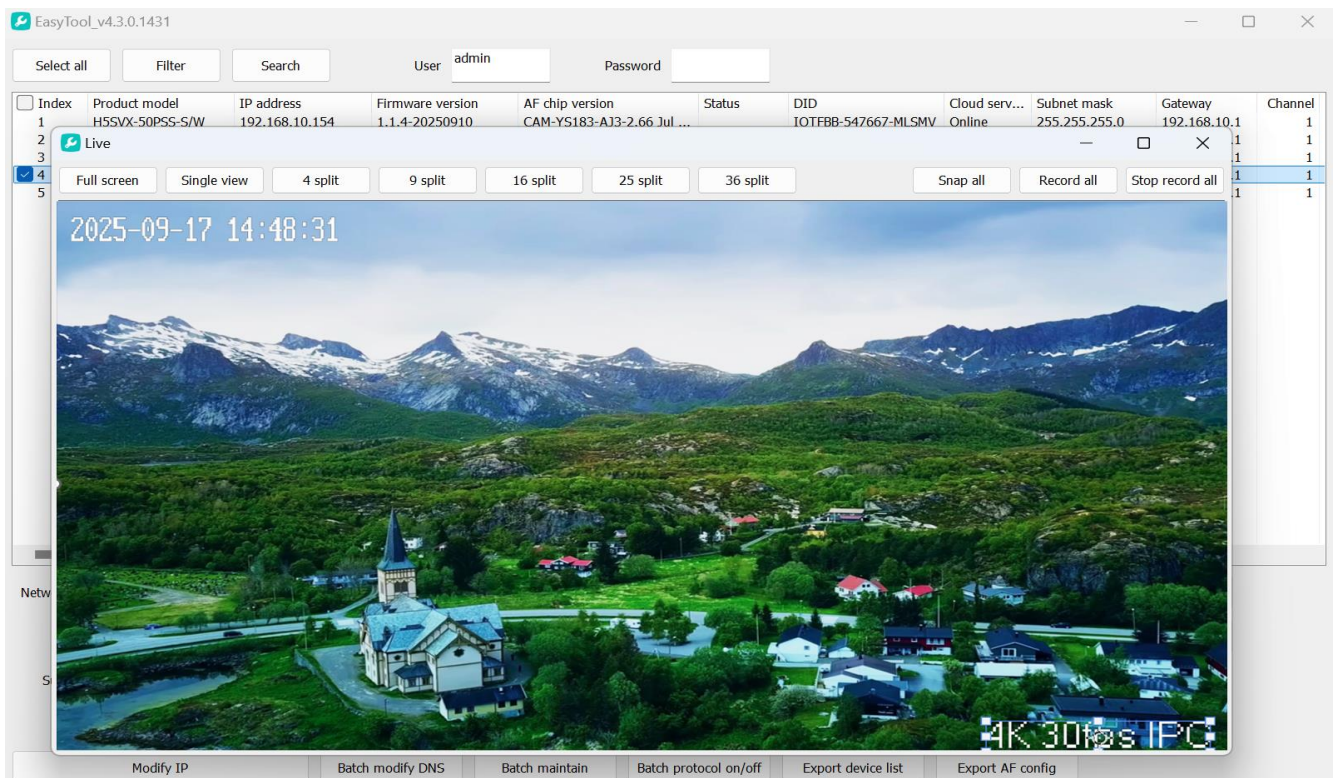
I, Download and install PC search device search tool

(Download address:<http://www.esunstar.net/upload/file/HiEasy/EasyTool.rar>)

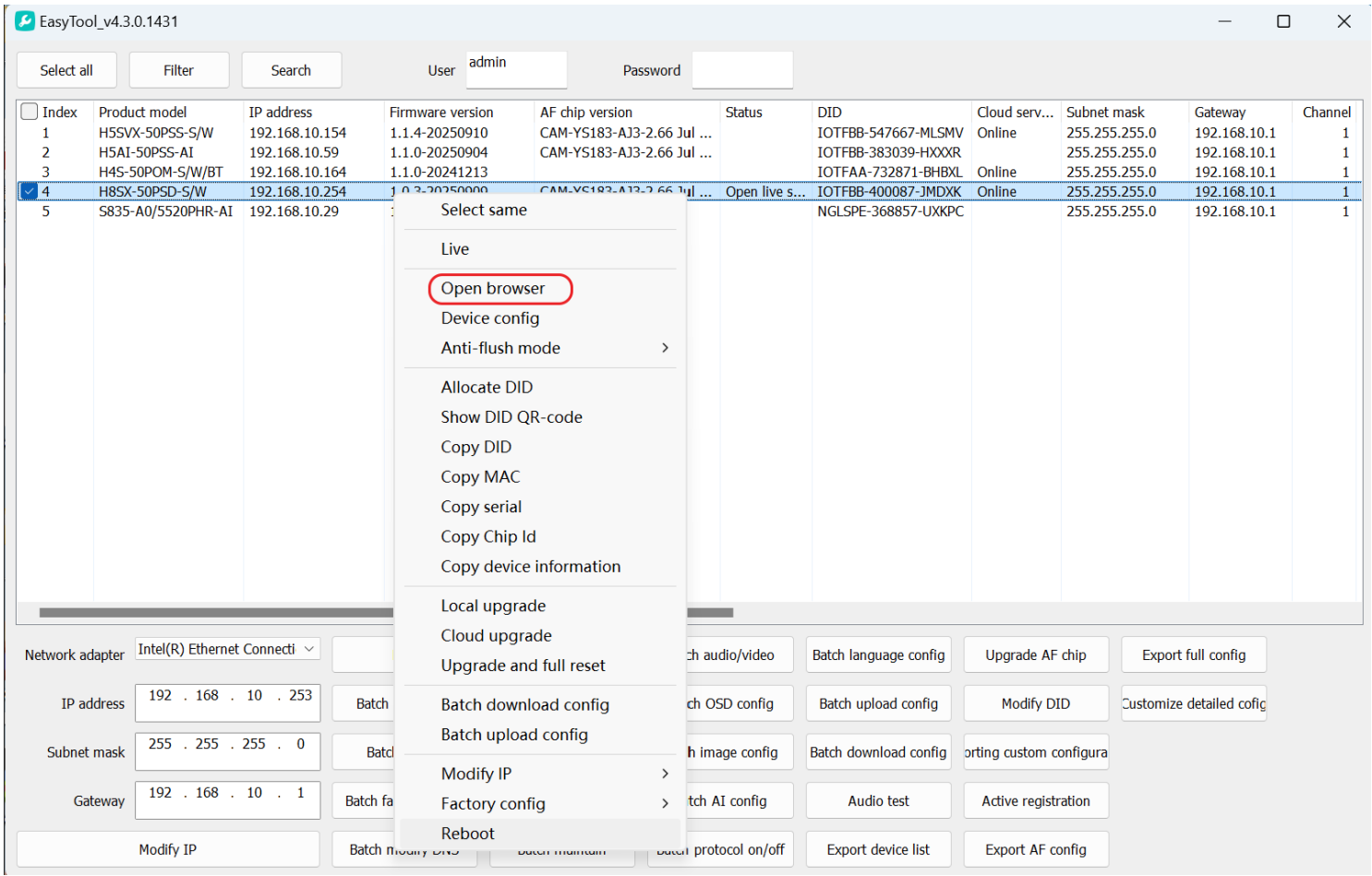
II, Extract the downloaded file and run "EasyTool.exe" file, as shown in the following figure



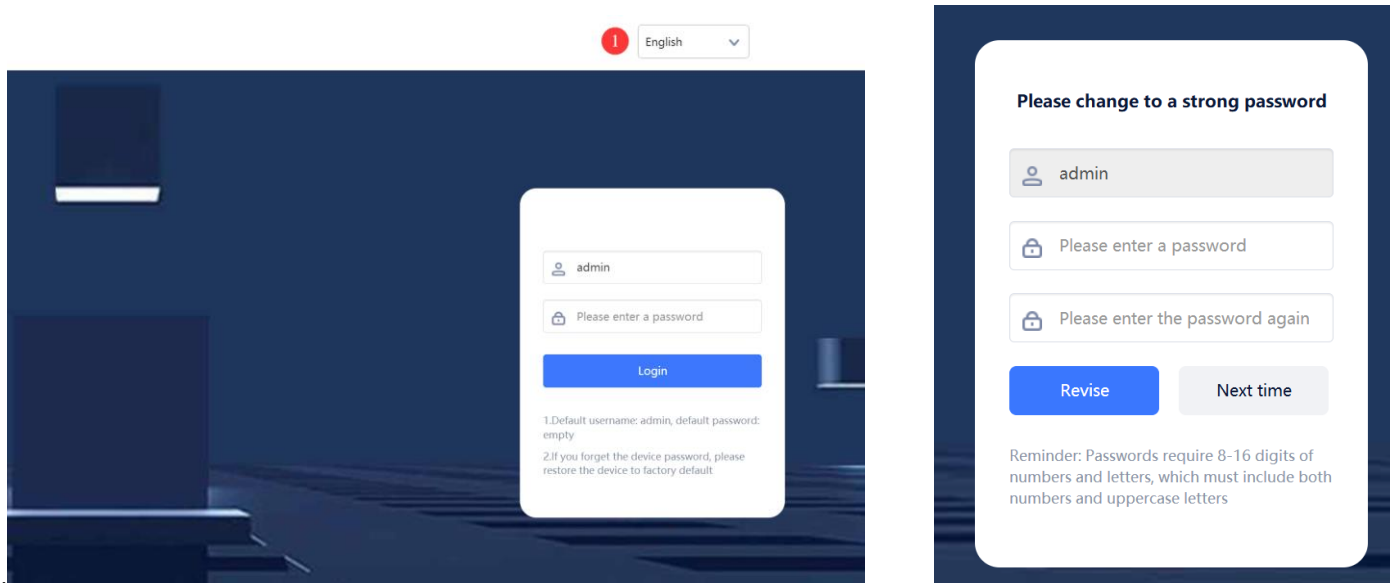
Click the "Search" button to find the camera. Double click on the searched camera to preview the video. As shown in the following figure:



III,Right click on the searched device to display actionable menus. Click on the WEB preview, and the device will automatically open the WEB browser.



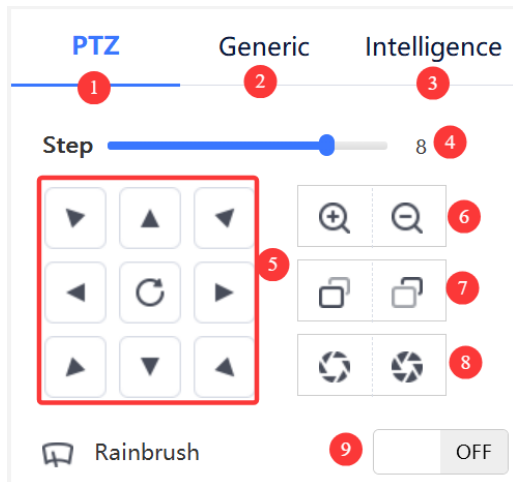
IV ,Select the language type for login at position 1. And click the "Login" button to log in to the camera system, as shown in the following figure



The default username for the first login is admin, and the password is empty. Therefore, it is recommended that you change a password when using the camera for the first time. As shown in the above figure. Of course, you can also click "Next time" directly to enter the system without changing your password.

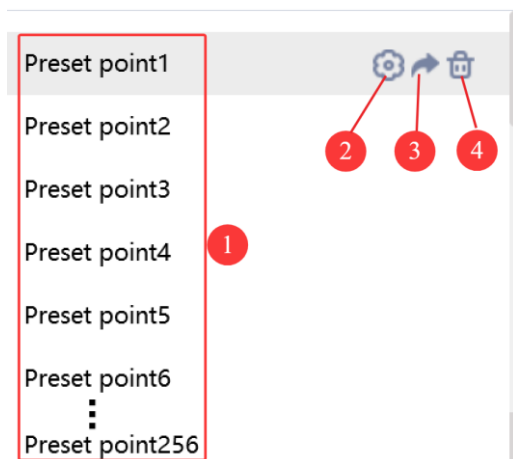


V,Description of WEB main interface buttons:



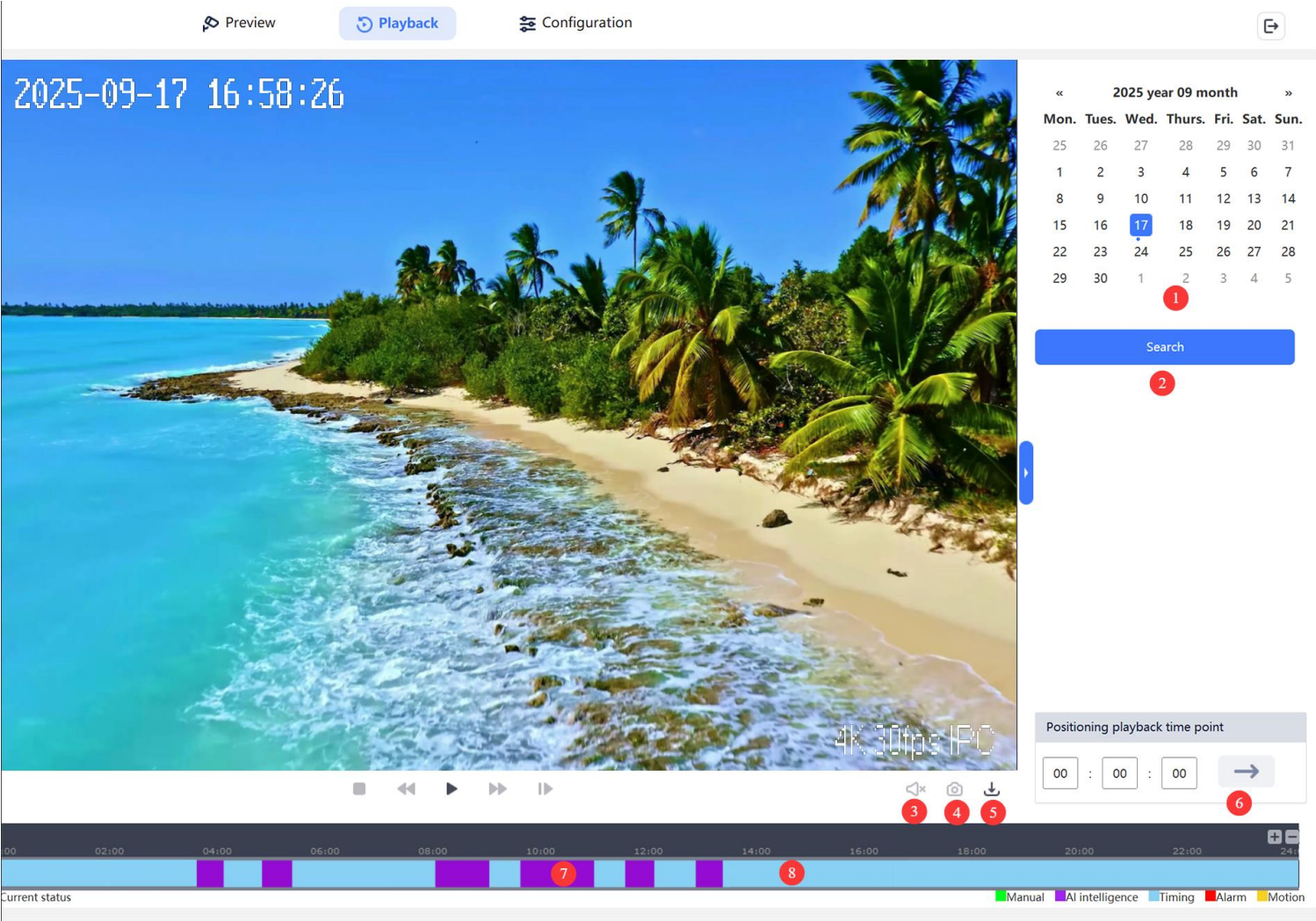
- 1,PTZ control operation interface
- 2,Quick setting of camera general parameters: including image mode, OSD display, audio and video settings.
- 3,Intelligent AI quick settings: including regional intelligent detection, cross-border detection, departure detection, and passenger flow statistics settings.
- 4,Pan Tilt Control speed adjustment
- 5,Pan Tilt Control direction button
- 6,ZOOM_+,ZOOM-
- 7,Manual focus+, - adjustment
- 8,Lens Iris adjustment (if supported by the device)
- 9, Wiper on and off (if supported by the device)

Preset point setting



- 1, PTZ preset position number, supporting 1-256 preset position selections
- 2, Set(add) the current preset position.
- 3,Call the current preset position.
- 4, Delete the current preset position

VI,Description of Playback interface buttons:



- 1, Select playback date;
- 2, Click the "Search" button to search for the video file with the current date. As shown in Figures 7 and 8.
- 3, Turn on audio during playback.
- 4, Capture a picture during playback.
- 5,Download the video to the computer in the format of * MP4

Download video

Start time

2025-09-17 06:16:03

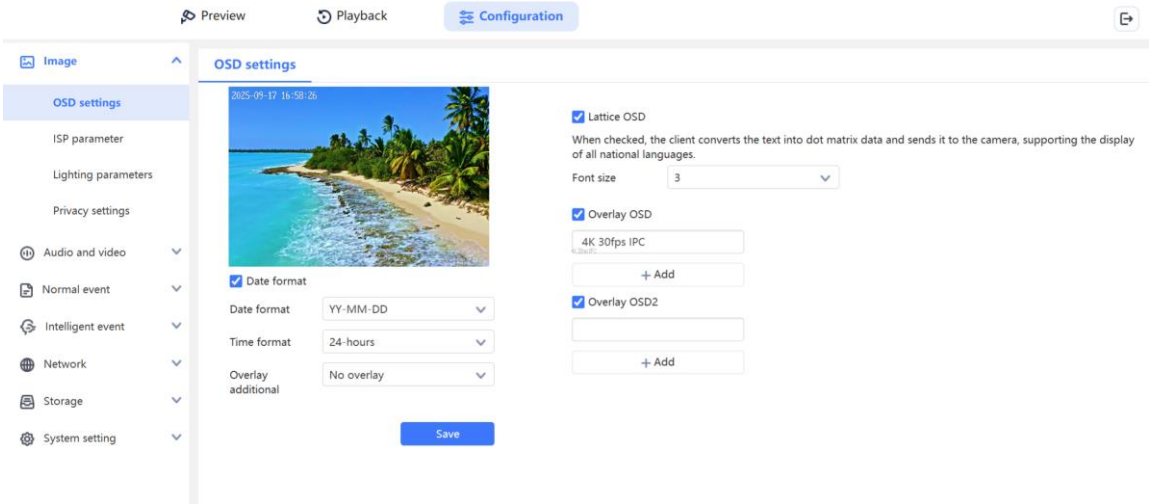
End time

2025-09-17 06:20:03

Download now

- 6, Customize playback time
- 7, Alarm recording
- 8, Ordinary video recording

VII,Description of Configuration interface:



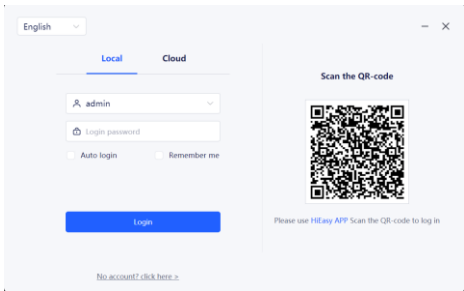
Part 5: [Windows PC Software Operation Instructions]

Please download the computer version of the centralized management software EasyVMS

Download address: <http://www.esunstar.net/upload/file/HiEasy/EasyVMS.zip>

1,Run EasyVMS and login, Default login username: admin, password is empty.

If you are using it on a LAN network, please select the "Local" login method. If you want to connect to a remote camera, please select the "Cloud" login method.



For the detailed manual of EasyVMS, please log in to the software and click on the "?" button as shown in the figure below to download the manual.

